

IMMEDIATELY REPORT ANY OF THE FOLLOWING SYMPTOMS TO YOUR DOCTOR:
(Close the clamp on the pump tubing to stop the infusion.)

- Increase in pain
- Redness, warmth, swelling, pain, major bruising and/or discharge at or near the catheter site
- Dizziness
- Light-headedness
- Blurred vision
- Ringing or buzzing in your ears
- Metal taste in your mouth
- Numbness and/or tingling around your mouth, fingers or toes
- Nausea or vomiting
- Drowsiness
- Confusion
- Other: _____

NUMBNESS

Be aware that you may experience loss of feeling at and around the surgical area. If numbness occurs, take proper measures to avoid injury.

PRECAUTIONS

- Do not reuse.
- Do not microwave.
- Protect pump and catheter site from water according to your doctor's instructions.
- Avoid contacting the filter with cleaning agents such as alcohol or soap.

MEDICATION

Medication: _____

Concentration: _____

APPROXIMATE DATE INFUSION WILL BE COMPLETED

CONTACT YOUR DOCTOR FOR ALL MEDICAL QUESTIONS

Doctor: _____

Phone: _____

NEXT APPOINTMENT

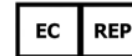
Date: _____

Time: _____

SPECIAL INSTRUCTIONS



Apex Medical Technologies, Inc.
San Diego, CA 92121
U.S.A.
www.solacepainrelief.com



EMERGO EUROPE
Molenstraat 15
2513 BH, The Hague
The Netherlands
Phone: +31.70.345.8570
Fax: +31.70.346.7299



CAUTION: Federal Law (USA) restricts this device to sale by or on the order of a physician.

U.S. Patents: 6,329,444; 6,569,375; 6,920,643
Patents Pending

®Solace is a registered trademark of Apex Medical Technologies, Inc.

90151G-EN



Patient Guidelines



LATEX-FREE

Patient Guidelines

Solace Post-Operative Pain Relief Infusion System

The Solace® Infusion System includes a single use elastomeric type pump filled with medication to treat your post-operative pain. The Solace pump is attached to one or two catheters which lead to your surgical site. These catheters deliver medication to your surgical site where it is needed to treat your pain.

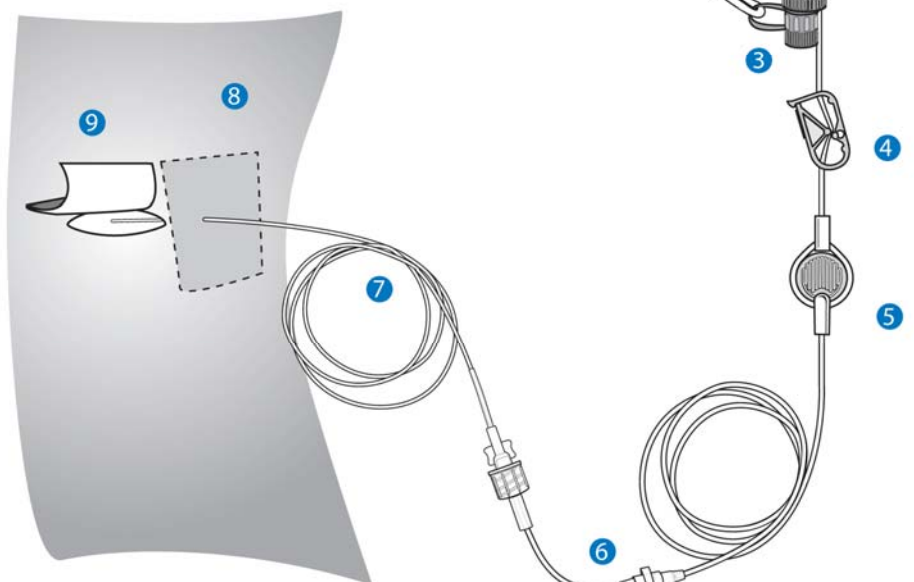
The Solace Infusion System treats pain locally, at the site of your surgery, and may provide better pain relief than taking narcotic type medication alone. This may allow you to take less pain medication.

In-Use

The pump is portable and can be carried with you during normal post-surgical activities by using the supplied clip or a carrying case. As the pump slowly delivers medication, it gradually becomes smaller in size. This change is hardly noticeable. Do not squeeze the pump in an attempt to force the medication out faster. The Solace pump has enough force to deliver your medication.

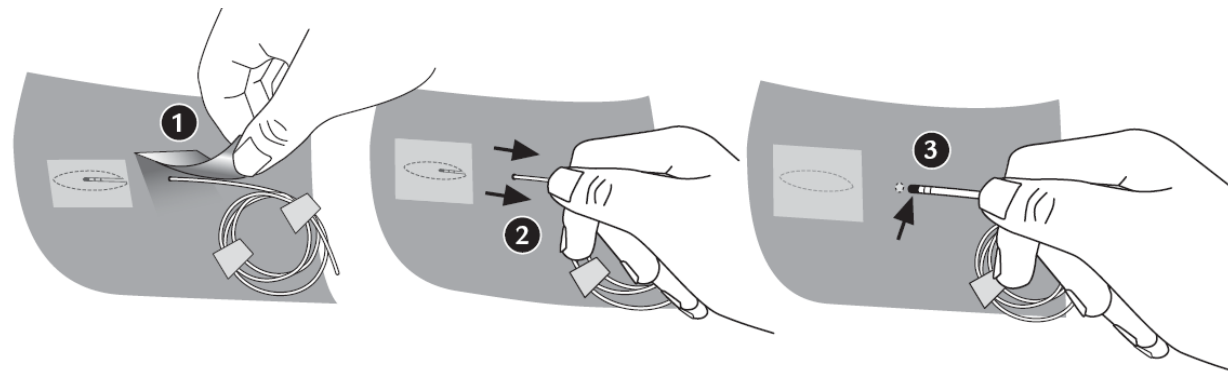
- It may take more than 24 hours after your surgery to notice a change in the size of your pump.
- You will not see a fluid line in the pump or the medication flowing through the tubing.

- 1 Clip
- 2 Solace Pump
- 3 Fill Port
- 4 Clamp
- 5 Filter
- 6 Flow Restrictor
- 7 Catheter
- 8 Dressing
- 9 Surgical Wound Site



You should also take any pain medication as instructed by your doctor.

- Ensure the white clamp is open (it moves freely along the pump tubing).
- Ensure that there are no kinks in the tubing.
- If you are using cold therapy or ice, place it away from pump and tubing.
- Do not tape or cover the filter.



Catheter Removal

After all of the medication has been delivered to your body, a hard plastic ball can be felt in the elastomeric bladder inside the deflated pump. Infusion is then complete and it is time to remove the catheter. Follow your doctor's instructions on removing the catheter but keep the following steps in mind:

- Remove the dressing from the catheter site.
 - 1
- Grasp the catheter close to the skin and gently attempt to slide it from the skin. If it is difficult or painful to remove or begins to stretch, stop and call your doctor.
 - 2
- Do not cut or pull hard to remove the catheter.
- After you remove the catheter, check the catheter tip for a black marking. If you do not see a black marking, call your doctor.
 - 3
- Place a bandage over the catheter insertion site.
- Repeat catheter removal procedure for other sites if you have more than one catheter.